





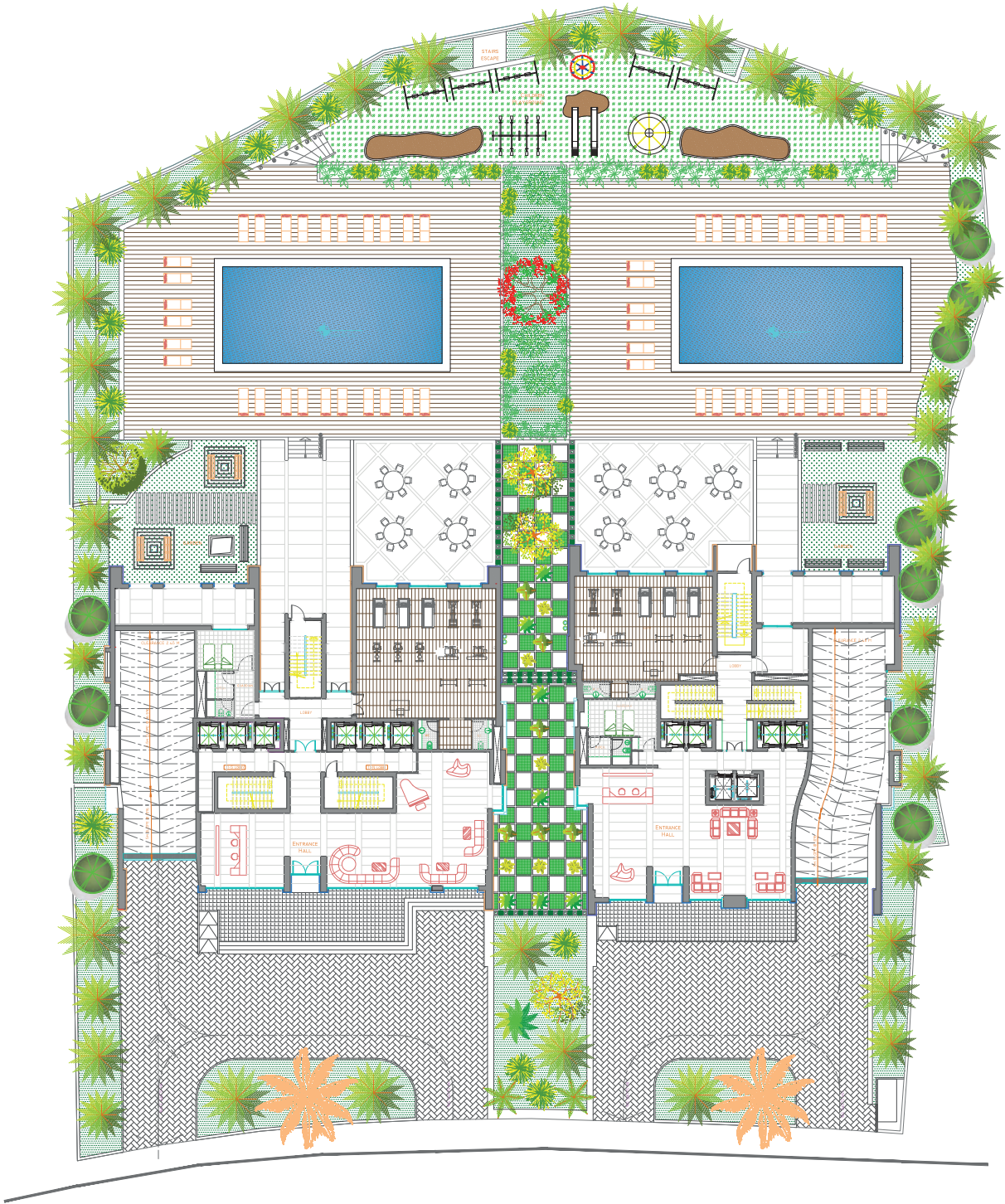
UN Compromising

THE DEVELOPER FIRMLY BELIEVES
THERE IS ABSOLUTELY NO COMPROMISE WHEN IT COMES TO
MATERIAL AND SPECIFICATION STANDARDS.





From 11th floor up





INSTANT Inspiration

SEAMLESSLY COMBINING
URBAN LIVING WITH STATE-OF-THE-ART
INFRASTRUCTURE AND FACILITIES,
TITANIUM IS SIMPLY A SUPERB CLASS ACT.

Constructed on an ethos that architecture influences both people and the environment in which it is set, TITANIUM is the epitome of sustainable urban planning at its best.

From the moment you enter the apartments you know you have entered a world of exceptional surroundings.

A distinct refuge enhancing the comfort of modern design with the luxury of light coupled with extensive floor space, large windows give each room a feeling of real space and openness which stands as a testament to pure, luxurious living.



T1

TITANIUM 107



Resurgence of Excellence

EACH ONE OF THE LUXURY APARTMENTS HAS BEEN METICULOUSLY DESIGNED AND DELIVERS SPACIOUS AND FLEXIBLE ACCOMMODATION THAT ENHANCES A UNIQUE SENSE OF STYLE.



Fine living cannot get better than this where luxury and quality come as standard.

Each apartment is an architectural delight infused with luxury appointments constructed from the highest standards of marble, wood and aluminium.

T2

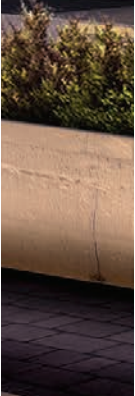
TITANIUM T09

ENTRANCE



Reflecting the environment in which it resides, TITANIUM immerses its residents into the irresistible charm of Ain el-Tineh offering a private and secure enclave right in the very heart of this cosmopolitan and thriving community.

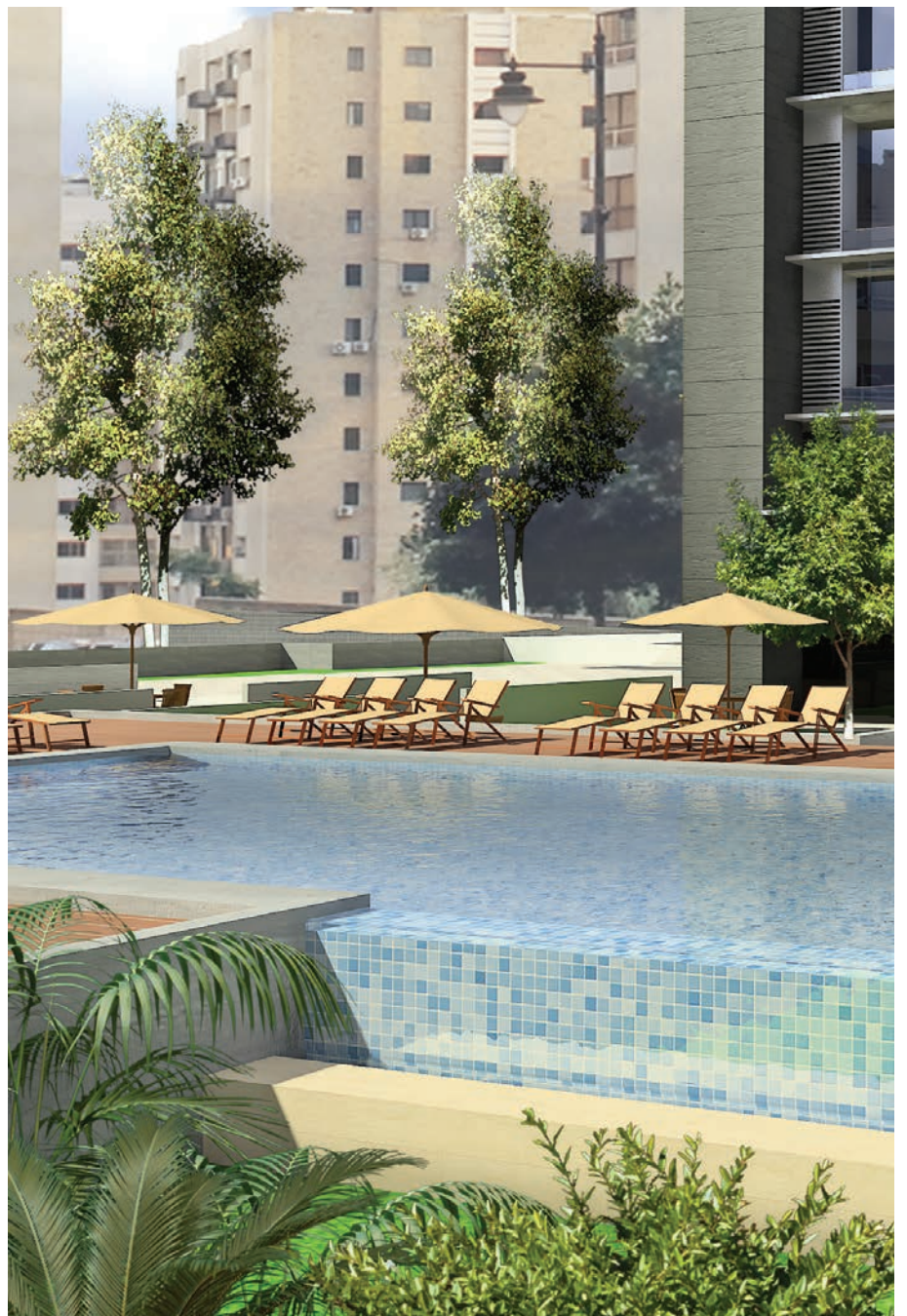
With a high-ceilinged entrance creating stunning effects, TITANIUM focuses around landscaped gardens and lawns.

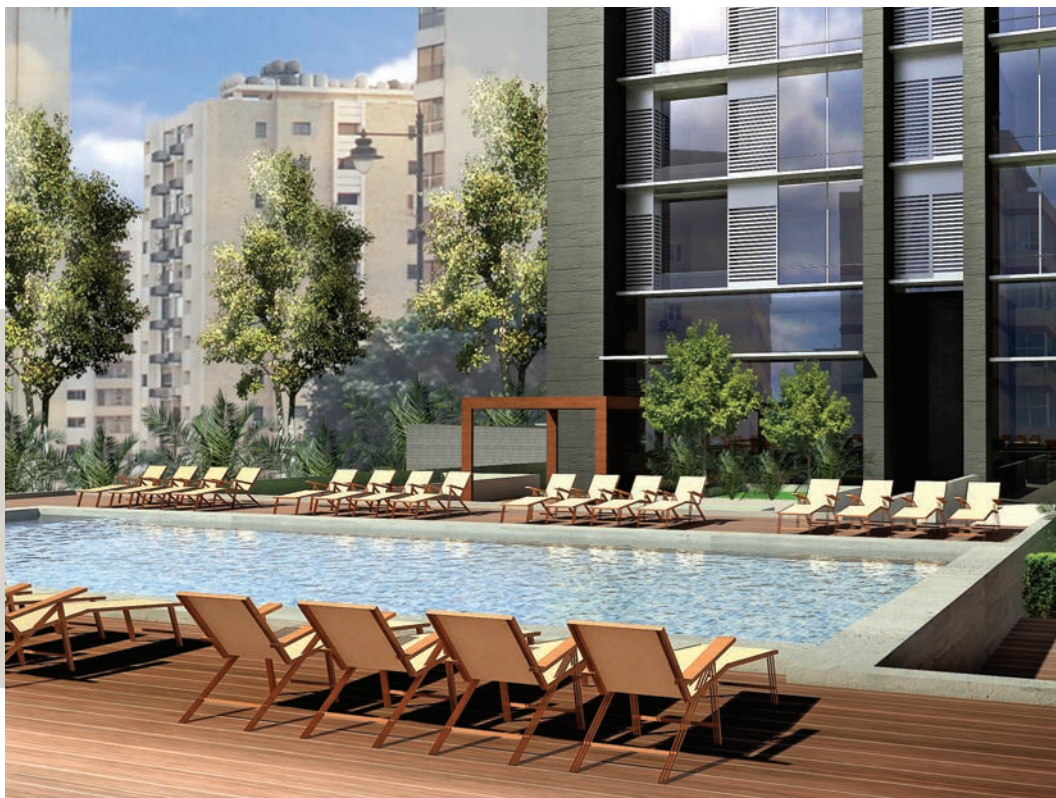




DISTINCT Identity

Imagine everything you could ever dream of in a city apartment: astonishing aesthetics; cutting edge design; spacious superior accommodation; contemporary features, all set in sumptuous surrounds that redefine the concept of city living. Boasting sweeping vistas of the Mediterranean from the 12th floor up, TITANIUM also has within its offerings Penthouse accommodation.





Designed with great attention to detail, the luxurious space is maximised to create a light serene feel with entertainment in mind aloft the bustling metropolis below.

Add a state- of- the- art gymnasium basking in natural light and leading to the pool, you know that meticulous attention has been paid to even the smallest architectural detail.





TITANIUM

AIN EL TINEH

DEVELOPER
HASSAN KRONFOL

UNESCO SQUARE, KOJOK BLDG. 3RD FLR.
BEIRUT - LEBANON,

TEL: +961 1 805005
FAX: +961 1 802002
E-MAIL: sales@kronfol.net
WEBSITE: www.kronfol.net